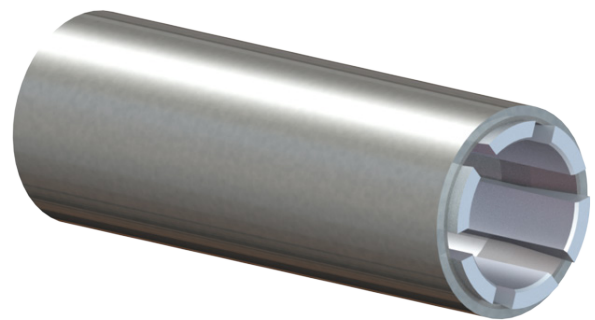


## Quick-Connect Lug Nut Collet

Michigan Scientific's Quick-Connect Lug Nut Collet Extensions are ideal for attaching wheel adapter plates to standard lug nuts and wheels. With many lengths and diameters, the lug nut extensions allow other wheel hardware and equipment to be easily mounted and dismantled.

### Features

- Great for installing wheel mounted sensors and instrumentation
- Conveniently attach to production lug nut/lug studs
- For safety, OEM lug nuts are not modified or replaced
- Wide range of sizes and lengths
- Stock of most sizes, for quick delivery



An adapter plate enables an assembly to mount to a variety of bolt circle patterns. Michigan Scientific offers many standard wheel adapter plates, used for mounting instrumentation to a wheel. Wheel adapter plates can also be customized for a specific application.



Quick-Connect Lug Nut Collets attach to OEM lug nuts, rather than replace them. This assures that the integrity of the vehicle is not compromised.

# Sizing Chart

Model	Width Across Flats		Sleeve Length	Outside Diameter	Sleeve Material	Pull Screw
	Min	Max				
AAA16	0.563 [14.3]	0.625 [15.9]	1.625 [41.3]	0.945 [24.0]	Stainless Steel	1/4-28
AAA25			2.500 [63.5]			
AA16	0.625 [15.9]	0.688 [17.5]	1.625 [41.3]	0.945 [24.0]	Stainless Steel	1/4-28
AA25			2.500 [63.5]			
A14	0.688 [17.5]	0.750 [19.1]	1.470 [37.3]	1.100 [27.9]	Aluminum	1/4-28
A16			1.625 [41.3]			
A20			2.000 [50.8]			
A30			3.000 [76.2]			
AB16	0.728 [18.5]	0.787 [20.0]	1.625 [41.3]	1.125 [28.6]	Stainless Steel	1/4-28
BB21	0.765 [19.4]	0.825 [21.0]	2.125 [54.0]	1.269 [32.2]	Aluminum	1/4-28
BB30			3.000 [76.2]			
B21	0.813 [20.6]	0.875 [22.2]	2.125 [54.0]	1.269 [32.2]	Aluminum	1/4-28
B21-SS			2.125 [54.0]	1.220 [31.0]	Stainless Steel	
B30			3.000 [76.2]	1.269 [32.2]	Aluminum	
CCC21	0.875 [22.2]	0.938 [23.8]	2.125 [54.0]	1.302 [33.1]	Aluminum	1/4-28
CCC30			3.000 [76.2]			
CC21	0.921 [23.4]	0.984 [25.0]	2.125 [54.0]	1.470 [37.3]	Aluminum	1/4-28
CC30			3.000 [76.2]			
C21	1.000 [25.4]	1.063 [27.0]	2.125 [54.0]	1.470 [37.3]	Aluminum	1/4-28
C30			3.000 [76.2]			
DD30	1.125 [28.6]	1.188 [30.2]	3.000 [76.2]	1.630 [41.4]	Aluminum	1/4-28
D28	1.250 [31.8]	1.310 [33.3]	2.875 [73.0]	1.850 [41.4]	Aluminum	1/4-28
D32-HS	1.250 [31.8]	1.310 [33.3]	3.250 [82.6]	1.875 [47.6]	Stainless Steel	1/2-20
DF32	1.475 [37.5]	1.535 [39.0]	3.250 [82.6]	2.186 [55.5]	Aluminum	5/16-18
F32	1.563 [39.7]	1.625 [41.3]	3.250 [82.6]	2.186 [55.5]	Aluminum	5/16-18

DIMENSIONS ARE INCH [MM]

